

Barking up the right tree



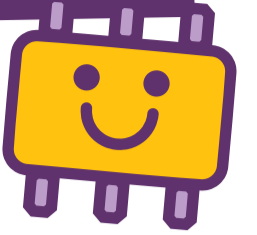
Do you really need to breed a dog?

If you plan to breed your dog, it is important to register as a breeder with NSW Pet Registry and obtain a Breeder Identification Number. Take a moment to consider if your dog truly needs to have a litter of puppies and the benefits of having them desexed.



Additionally, it is crucial to have a plan in place for the puppies in case you are unable to sell them. Remember, it is your responsibility to microchip and vaccinate each puppy.

How do you microchip and register your pet?



Before you can register your pet, it must first be microchipped by a vet or an authorised identifier. Microchips are the size of a grain of rice and are implanted under your pet's skin.

Also, making sure your info is up to date on NSW Pet Registry means you'll have them back in your arms sooner than they can roll in something smelly.

You can register or update your existing details of your cat or dog over the counter at Council or at petregistry.nsw.gov.au

Barking dogs

Dogs bark for several reasons, but nuisance barking is when they take a long time to calm down after starting to bark or when they bark excessively, especially at night. Understanding what triggers your dog to bark and training can help address this issue.

You can find out more about reporting a nuisance barking dog and what to do to help your dog at ksc.pub/barking

Considering a pet?

If you're thinking about adding a furry friend to your family, consider rescuing one in Council's care.



See them at ksc.pub/pets



ksc.pub/pets

Chipping + registration – it's a must

Your dog is required to wear a collar with a name tag. And they need a chip!

Make sure your dogs are microchipped before they reach 12 weeks and registered by six months.

Not only will you avoid a fine but this

helps rangers and vets to identify them and return them to you the same day.

In the unfortunate event that your pet dies, you must notify Council within 28 days – or 24 hours for restricted, dangerous or menacing dogs.

Seen a stray animal?

We all want to help a lonely dog but please take care.

If you come across a stray animal, do not attempt to capture it unless you are sure it is safe to approach.

The best thing to do is share a picture on social media, along with the date, time and location.

If you do help a stray you are taking



responsibility for it. You will need to care for it until it can be checked-in to the pound or handed over to a rescue organisation.

This may not be straight away if the pound and rescues are full.

If you find a dog with no collar, you can take it to a vet for identification or call Customer Service on 6566 3200 to arrange for a ranger to scan it – but you cannot leave the

animal with the vet or rangers. Please do not bring the stray to our Customer Service Centre. They cannot hold animals.

Protecting all animals great and small



We all have the important task of protecting our native wildlife in the Kempsey Shire. Sadly, dogs sometimes attack koalas and other native animals, leading to their death. There are positive things we can do to help.

Firstly, keep your pets inside during the late afternoon, overnight, and until mid-morning when wildlife is most active. If you have a cat, it's best to keep them indoors or provide them with an enclosed outdoor area.

When walking your dog, always use a leash and make sure they don't chase wildlife.

What about owning a cat?



Cats are super fun and make great companions. But being a responsible owner is important.

By the time your cat is six months old, you need to register them with Council.

All cats should be microchipped and wear collars with tags showing they have a home.

If your cat is not desexed, an annual permit is required. Getting them desexed keeps them healthy, safer and stops any unwanted litters. If you don't follow these rules, you can get fined.

Doggy tails the rules of play for your pooch!

As a dog owner, there are simple rules you need to obey when taking your dog into a shared public space.

- It must be on leash the entire time unless you're in an off-leash zone.
- You must clean up its droppings and put them in a public red bin.

There are dedicated off-leash areas for dogs and their owners to enjoy, play and exercise.

There are signposted off-leash zones at many local beaches and some public areas.

See them at ksc.pub/offleash

There are some areas where dogs are not allowed, which are:

- any part of a national park
- sporting fields, school grounds, childcare centres, swimming pools and children's play areas
- within 10 metres of food preparation or consumption areas

These rules do not include service animals for people with disability. Proof of service animal is required.



PAWs disease and illness



Your dog's well-being should be a top priority, even if they seem healthy and happy.

Council and Friends of Kempsey Pound have noticed more cases of dogs affected by parvovirus and mange. The good news is that these conditions can be prevented with the right precautions.

As a responsible pet owner, make sure your dog receives up-to-date vaccinations, including protection against parvovirus, available at your local veterinary clinic. Regular vet visits for vaccinations also help safeguard your furry friend against other diseases like hepatitis and distemper.

Additionally, you can easily control mange by regularly treating your dog for worms, ticks, and fleas.

The reality of backyard breeding

Backyard breeding can lead to devastating consequences, as seen in the case of Cuddles. The thin and frightened Cuddles ended up in the care of Council after her backyard breeders abandoned her. Neglected, malnourished and suffering from several health conditions including mange, she faced a poor quality of life.

Friends of Kempsey Pound launched a fundraising campaign to cover her veterinary expenses, and the response was overwhelming, raising over \$7,000. With this support, Cuddles began her long road to recovery receiving the necessary care for her to lead a healthy and happy life.

While it is heartbreaking to witness animal mistreatment, rescue groups and compassionate individuals can make

a significant difference by offering neglected animals a fresh start and the life they truly deserve. Cuddles' story has a fortunate ending, but many victims of backyard breeding aren't discovered until it's too late.



Joining forces to save local pets



In just one year, Council sees more than 300 animals come into their care. With the help of Friends of Kempsey Pound volunteers, it is possible for Kempsey Pound to be a 'no-kill' pound. The volunteer organisation assists Council by taking many impounded animals into temporary care.

They also host regular prevention and treatment days to vaccinate local dogs against deadly illnesses.

This great local charity is always looking for volunteers to help out, whether it be at events like this, fostering animals or visiting and exercising dogs in Council's care. If you're interested in volunteering or want to take your dog to the next treatment day, join the **Friends of Kempsey Pound** group on Facebook.

REPORTING CRUELTY

Please report neglect or cruelty to animals to the RSPCA on 1300 CRUELTY or 1300 278 3589