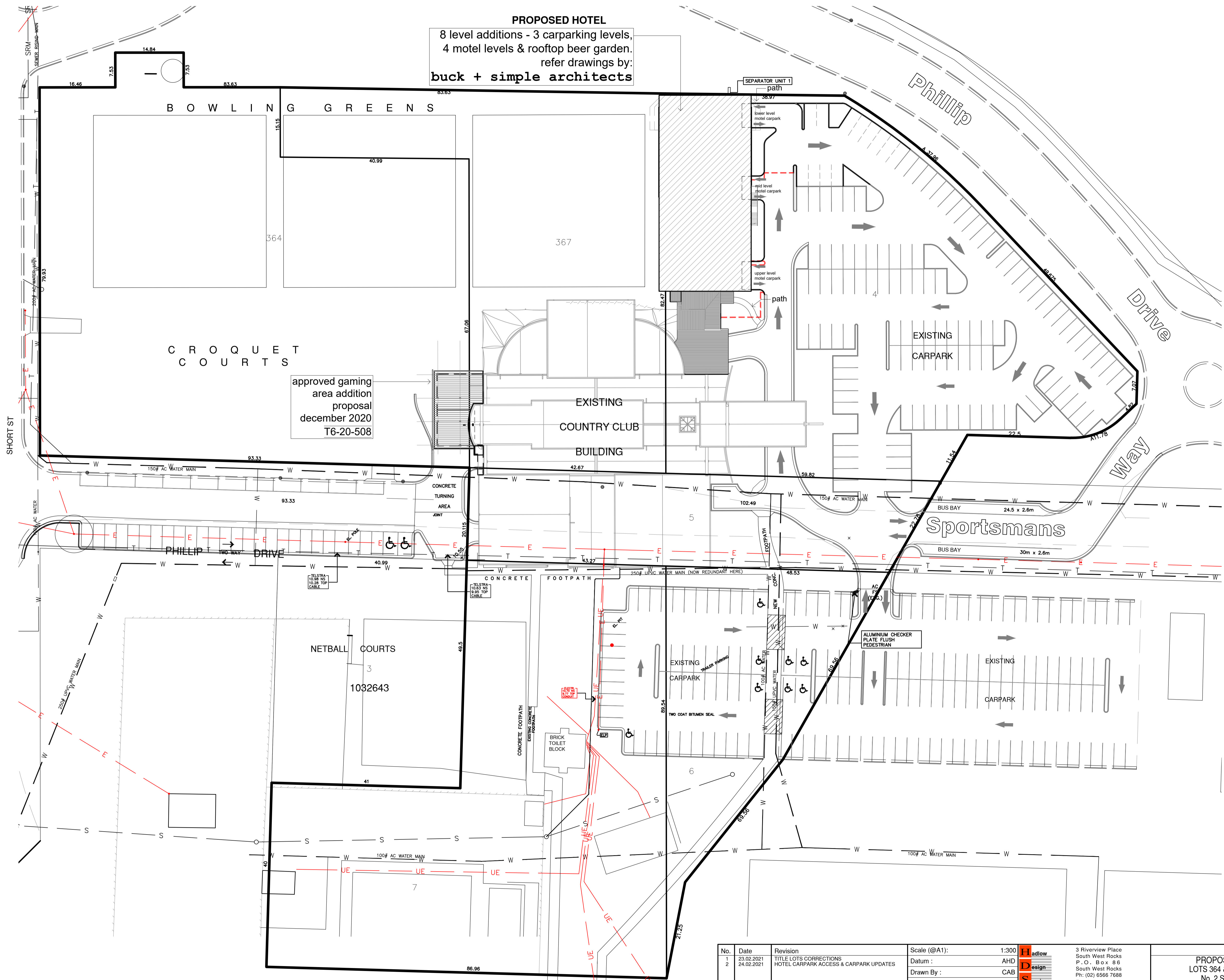


- Legend**
- EXISTING
 - eOE OVERHEAD ELECTRICITY
 - eUE UNDERGROUND ELECTRICITY
 - eT TELSTRA CABLING
 - eS SEWER LINE
 - eW WATER MAIN
 - eSW STORMWATER
 - KERB & GUTTER (150mm INTEGRAL)
 - KERB ONLY (150mm HIGH)
 - CONCRETE MEDIAN (100mm HIGH)
 - eSS SUBSOIL LINE (100mm PVC)
 - eSS SUBSOIL EXTENSION TO PIT (100mm SEWER GRADE PVC)
 - ♿ DISABLED CARPARK SPACES WITH SYMBOLS PAINTED

PROPOSED HOTEL
 8 level additions - 3 carparking levels,
 4 motel levels & rooftop beer garden.
 refer drawings by:
buck + simple architects

approved gaming
 area addition
 proposal
 december 2020
 T6-20-508



Overall Site Plan
 Scale 1:400

No.	Date	Revision	Scale (@A1):	1:300
1	23.02.2021	TITLE LOTS CORRECTIONS	Datum:	AHD
2	24.02.2021	HOTEL CARPARK ACCESS & CARPARK UPDATES	Drawn By:	CAB
Approved:			Date:	27 January 2021
Drawing Ref.:			13026-21H[2].dwg	

Hadlow
Design
Services
 3 Riverview Place
 South West Rocks
 P.O. Box 88
 South West Rocks
 Ph: (02) 6566 7688
 Fax: (02) 6566 7644
 E: info@hadlowdesign.com.au
 CIVIL & STRUCTURAL ENGINEERS . BUILDING DESIGNERS . PLANNERS . PROJECT MANAGERS

L.G.A. KEMPSEY
 PROPOSED HOTEL & ROOFTOP BEER GARDEN
 LOTS 364 & 367 DP754396 & LOTS 4, 5, 6 & 7 DP1032643
 No. 2 SPORTSMANS WAY, SOUTH WEST ROCKS
 For: SOUTH WEST ROCKS COUNTRY CLUB Ltd.
 DEVELOPMENT APPLICATION
 Overall Site Plan

Sheet Ref.:	A1	Sheet	2
Formal:	A0.01	Rev. No.:	1 of 1

I:\Projects\2021\13026-21H\13026-21H[2].dwg 24 February 2021 14:13:10